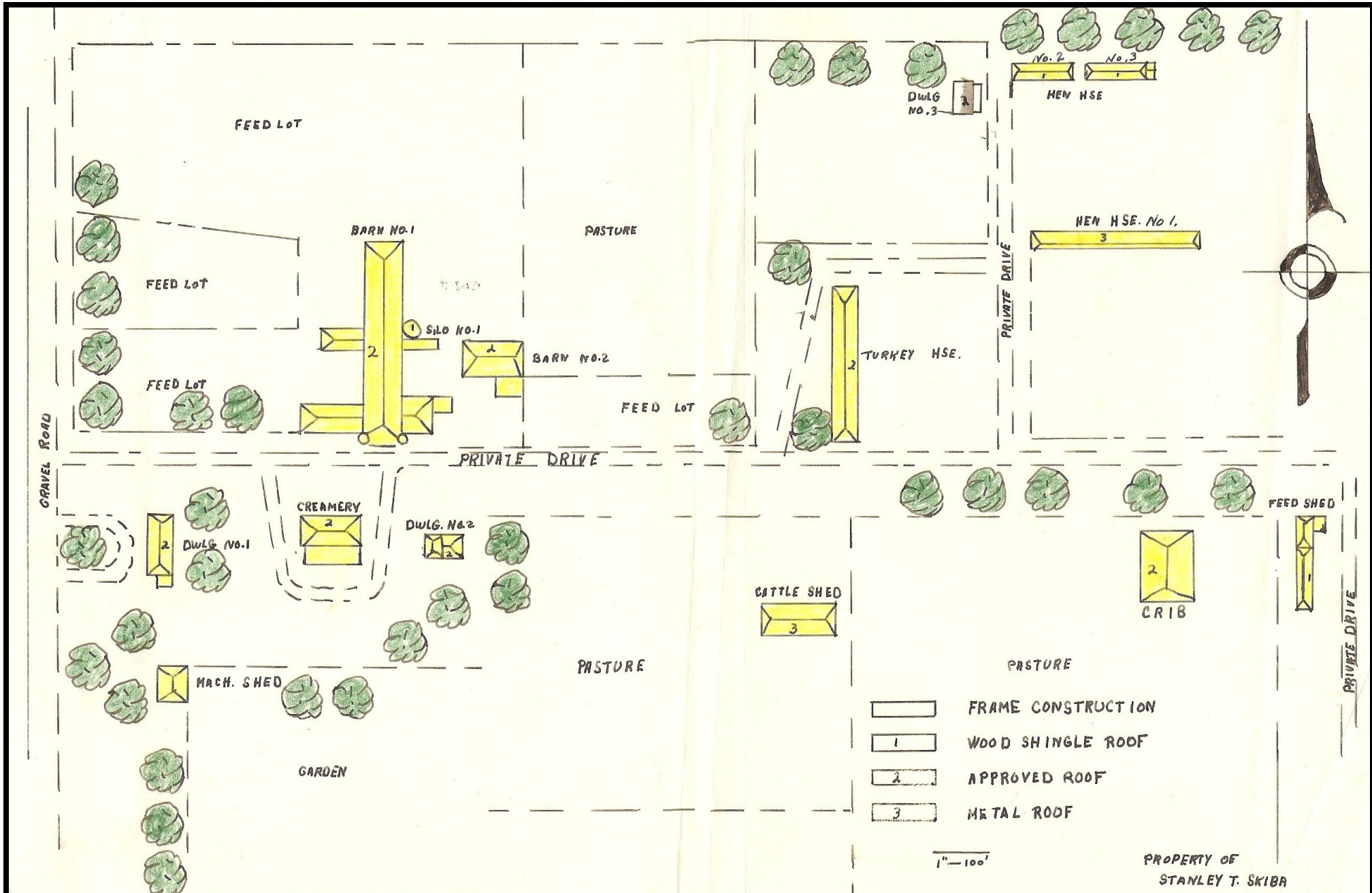


Radisson Farm

Agricultural Heritage at the Heart of Blaine



Schematic of entire farm—from insurance binder, dated May, 1954. Farm was insured for \$71,075 for a 5-year premium of \$2,760.25.

The barn was built in the 1880's as a "horse barn" on the farm of Albert Johnson. One of the carpenters, Richard Rickaby, was hired as farm foreman, after the barn was completed.

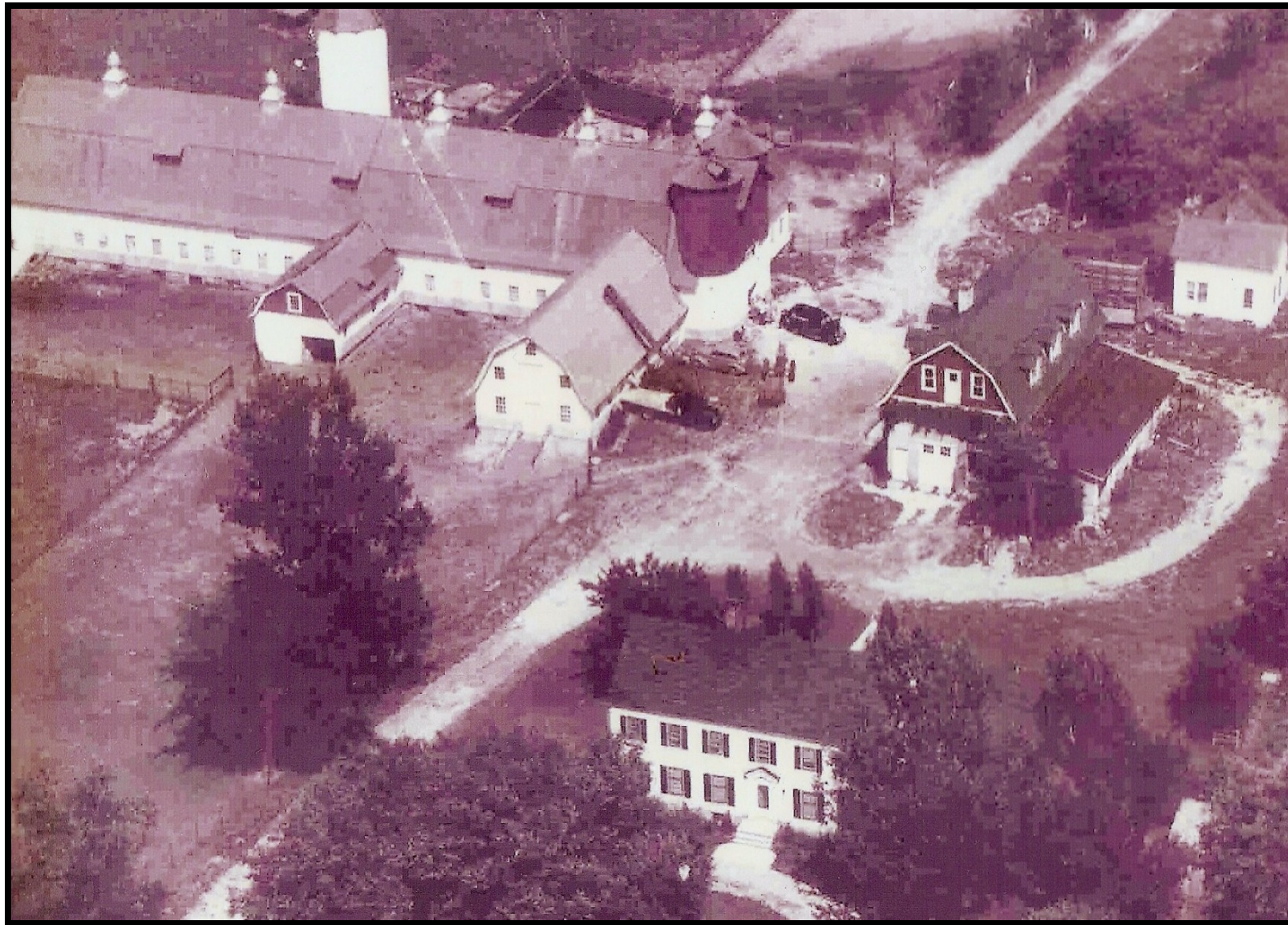


Creamery building, behind the main house. Top two floors had sort of "hotel rooms" for hired hands. The main floor consisted of the Creamery on the north end, slaughterhouse to the east and a garage and strage space to the south. (Photo ca. 1962)

Stanley Skiba, with children Tom and Ann, on Radisson Farm. Skiba purchased the 1200 acre farm from Radisson Hotel creditors and immediately sold much of its Highway 65 frontage to pay for the farm parcel.



Thanks and acknowledgement for source material
Ann Marie Skiba Canis Ken Kaiser
Carlson Companies — Radisson Archive



Arial view. Located at what is now 105th Ave. Radisson Road, gravel until about 1960, runs right in front of the main house. (Undated photo)

RADISSON FARM TIMELINE	
1905	Edna Dickerson of Chicago received an inheritance upon the death of her distant cousin, Minneapolis real estate lawyer Albert Johnson. His estate was valued at between one and two million dollars
1906	Edna married Chicago lawyer Simon Kruse
1908	At the urging of Minneapolis business and civic leaders, the Kruses agreed to build a luxury hotel on 7th Street in downtown Minneapolis with the money received from Edna's inheritance. Construction began that summer
1909 (Dec 15)	Hotel Radisson (named for French explorer Pierre Esprit Radisson) opened at a cost of \$1,500,000
1914 (ca)	Radisson Farm was established in Blaine by Simon Kruse on land included in Albert Johnson's estate
1925	Flame Room restaurant opened in the Hotel Radisson using produce grown on the Radisson Farm
1934	The Hotel Radisson and Radisson Farm were foreclosed, due to mounting debt and effects of the Great Depression
1946	Local farmer Stanley Skiba and his family moved to Radisson Farm, having purchased it from a Chicago bank. A prominent community leader, Stanley Skiba had served on the Blaine City Council and the Anoka County Welfare Board
1959	Farmland taken over by the Metropolitan Airports Commission through eminent domain
1962	Skiba family moved from Radisson Farm
1963	Main farmhouse was relocated to County Road J and Lexington Avenue in Blaine
2010	Radisson Farm land — largely occupied by the National Sports Center, Blaine Soccer Complex and Victory Links Golf Course—continues to be owned by the Metropolitan Airports Commission

Blaine Historical Society
www.blainehistory.org

